



SHIJIAZHUANG AN PUMP MACHINERY CO., LTD



ООО «ТИ-СИСТЕМС» ИНЖИНИРИНГ И ПОСТАВКА ТЕХНОЛОГИЧЕСКОГО ОБОРУДОВАНИЯ

Интернет: www.tisys.ru www.tisys.kz www.tisys.by www.tesec.ru www.ти-системс.рф

Телефоны: +7 (495) 7774788, 7489626, (925) 5007155, 54, 65

Эл. почта: info@tisys.ru info@tisys.kz info@tisys.by

Company Overview

Shijiazhuang An Pump Machinery Co., Ltd. main product series include slurry pumps, sewage pumps, clean water pumps, chemical pumps, fire pumps, irrigation pumps, etc.

An Pump Machinery has an independent pump selection, design, and R&D team, and a complete production chain of casting, heat treatment, machining, assembly, painting, testing, etc., to ensure that we can grasp the product quality in each process and can Provide customers with efficient and energy-saving design solutions in various pump system projects.

Various series of pumps and engineering supporting equipment produced by our factory have been exported to more than 90 countries overseas. The projects mainly cover: mine tailings treatment, dredging engineering, power plant desulfurization, boiler water supply, sewage treatment, construction engineering, fire fighting engineering, ship engineering , Desalination, etc.

An Pump technical team is composed of several senior foundry engineers, senior smelting engineers, mold technicians, machining technicians, assembly engineers, inspection technicians, electric power technicians, field application engineers and various engineers to provide support and guarantee for product stability and after-sales service.



Quality Assurance System

Continuous improvement of corporate quality system

The factory passed the international quality system ISO 9000 certification in 1990

In 2012, we passed the SGS certification of General Notary

In 2012, we passed the BV certification of French Classification Society.

In 2012, we passed the CE certification of EU

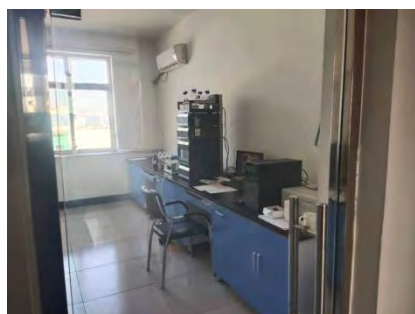
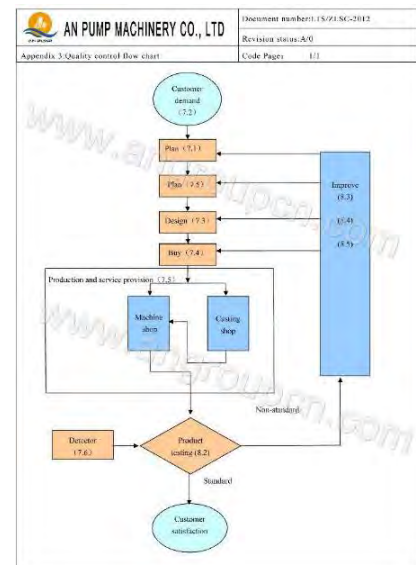
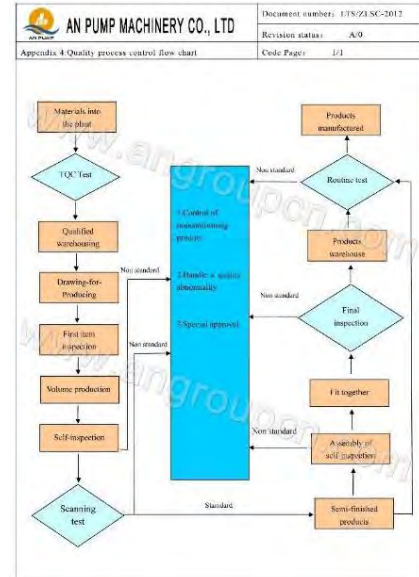
In 2012, we passed the TUV certification of Germany.



Quality Control & Quality Traceability System

An Pump Machinery has developed a quality traceability process internally. Each product has a code when it leaves the factory. Each code can be queried from the person in charge of the casting, machining, assembly, testing, coating, and shipping processes, establishing a perfect quality. The control system and traceability system escort product quality.

Our factory inspection center includes: German OBLF material spectrum analyzer, infrared carbon and sulfur analyzer, bearing vibrator, hardness tester, optical balance, mechanical performance tester, ultrasonic flaw detector, magnetic particle flaw detector, etc. Professional engineers use advanced testing equipment to provide a strong guarantee for product quality.



Equipment

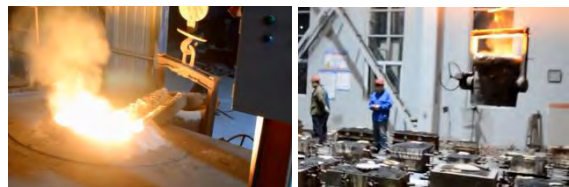
The machining center has multiple machining production line equipment such as CNC vertical lathes, wire cutting machine tools, boring and milling machines, CNC grinders, etc., to form a machining CNC center to ensure product processing accuracy; The assembly center and painting workshop are equipped with more advanced equipment production lines to ensure product quality and appearance.



Foundry

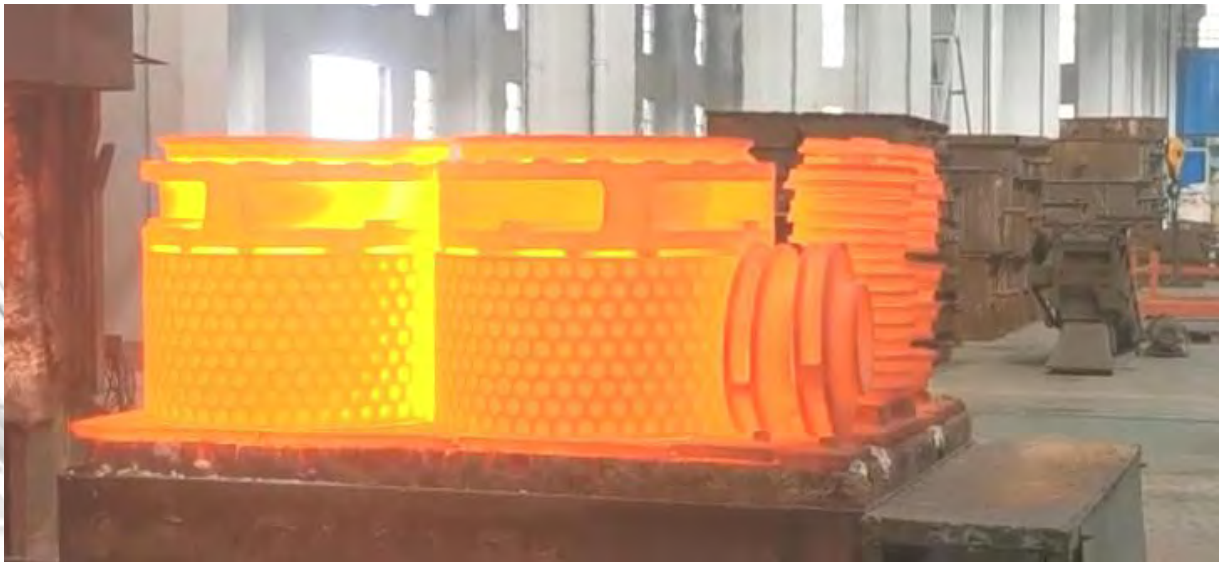
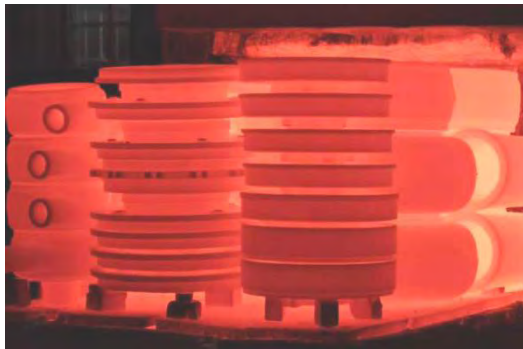
Computer simulation of casting mold and product application in the foundry workshop, automatic sand casting mold machine, precision casting aluminum mold; resin sand, coated sand, lost foam and other casting processes.

Many intermediate frequency induction furnaces cast batches of neat and smooth casting products; it can meet the various requirements of different customers and different projects for pump materials. Casting materials include: cast iron, high chromium alloy(Cr27MoNi), different grades of stainless steel (SS304, SS316, SS316L, duplex steel, etc.), brass, bronze, etc.



Heat Treatment

The heat treatment workshop has four curve-controlled heat treatment electric furnaces, which are automatically controlled by a computer to properly adjust the furnace temperature and control the heat treatment process. After the heat treatment, the metallographic structure of the product changes, and the mechanical properties are greatly improved. The service life is several times that of no heat treatment accessories.



Stock

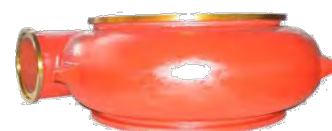
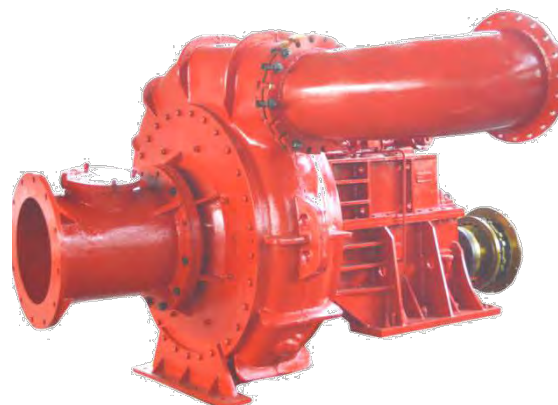
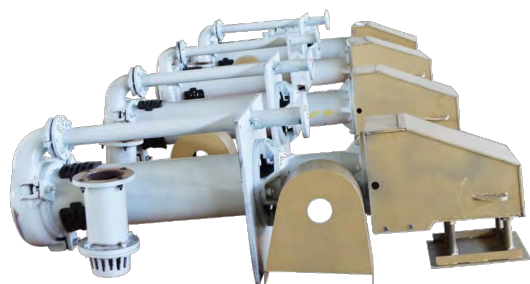
Usually, our delivery time is about 25 days, but sufficient inventory ensures that we can provide the best quality products in the shortest time when customers need it urgently.



Main Products

Slurry Pump & Dredging Pump

An Pump Machinery provides slurry pumps and sand dredging pumps which are mainly used in mine slurry transportation, drilling mud transportation, coal washing plant coal slurry and heavy medium transportation, dredging rivers, river dredging and silt removal, corrosive slurry transportation and other fields; the product has good comprehensive performance, can realize long-distance and high-lift transportation of mortar, and has strong passing capacity; the grit pump has a particle size of up to 380mm; high-strength corrosion resistance, abrasion resistance, horizontal pump and vertical pump, and high material Chromium alloy wear-resistant and corrosion-resistant materials can also be selected from rubber wear-resistant and corrosion-resistant materials.



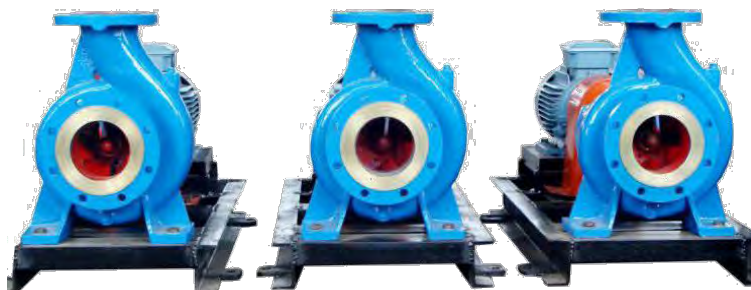
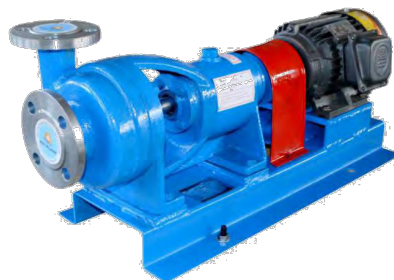
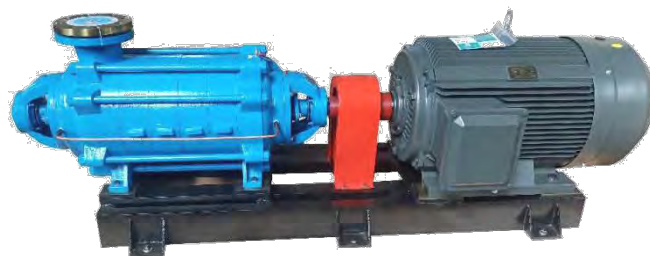
Main Products

Water Pump & Corrosion Resistant Pump

The pump applications provided by An Pump Machinery involve all sectors of the people, such as: hot and cold water circulation, urban water supply and drainage, irrigation, fire protection, seawater transportation, construction water, water conservancy facilities, acid and corrosion resistant chemicals and other industries.

The main products include large-flow double-suction pumps, high-lift multi-stage pumps, and end-suction pumps with intermediate performance, which are divided into horizontal pumps and vertical pumps, and can be equipped with diesel engines or motors according to customer needs.

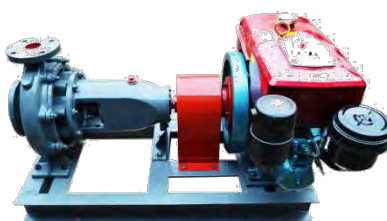
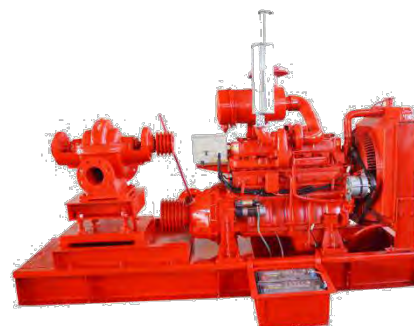
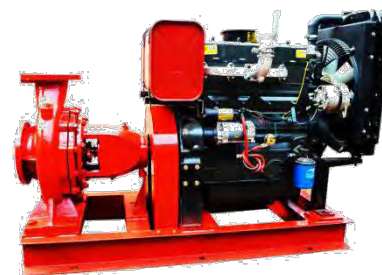
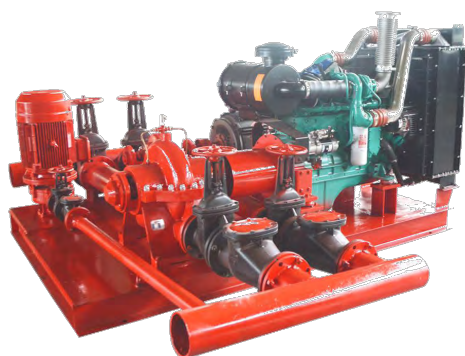
According to the different needs of customers and different engineering projects, in terms of materials, An Pump Machinery can provide cast iron, ductile iron, cast steel and different grades of stainless steel (SS304, SS316, SS316L, duplex steel, etc.), brass, bronze and other materials.



Main Products

Diesel Engine Pump Set

The water pump, corrosion-resistant pump or slurry pump series provided by An Pump Machinery can be used with diesel engine power. For many years, the matching diesel engines include Cummins, Deutz, China Weifang Power, Changchai and other well-known diesel engines. We OEM according to customer needs, and the matched diesel pump units are sold to many customers in Europe, Southeast Asia, America, Africa and other regions, and are widely praised.



Performance Testing



Shipment

We have a logistics department that is responsible for delivery. We carefully count the quantity of the goods, carefully check the firmness of the packaging, check that the goods are completely fixed when loading, and can only be shipped after the port shipper confirms that it is correct.



Application



Technology R&D Team



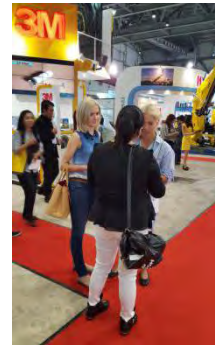
ООО «ТИ-СИСТЕМС» ИНЖИНИРИНГ И ПОСТАВКА ТЕХНОЛОГИЧЕСКОГО ОБОРУДОВАНИЯ

Интернет: www.tisys.ru www.tisys.kz www.tisys.by www.tesec.ru www.ти-системс.рф

Телефоны: +7 (495) 7774788, 7489626, (925) 5007155, 54, 65

Эл. почта: info@tisys.ru info@tisys.kz info@tisys.by

International Exhibition



Customers' Visiting



ООО «ТИ-СИСТЕМС» ИНЖИНИРИНГ И ПОСТАВКА ТЕХНОЛОГИЧЕСКОГО ОБОРУДОВАНИЯ

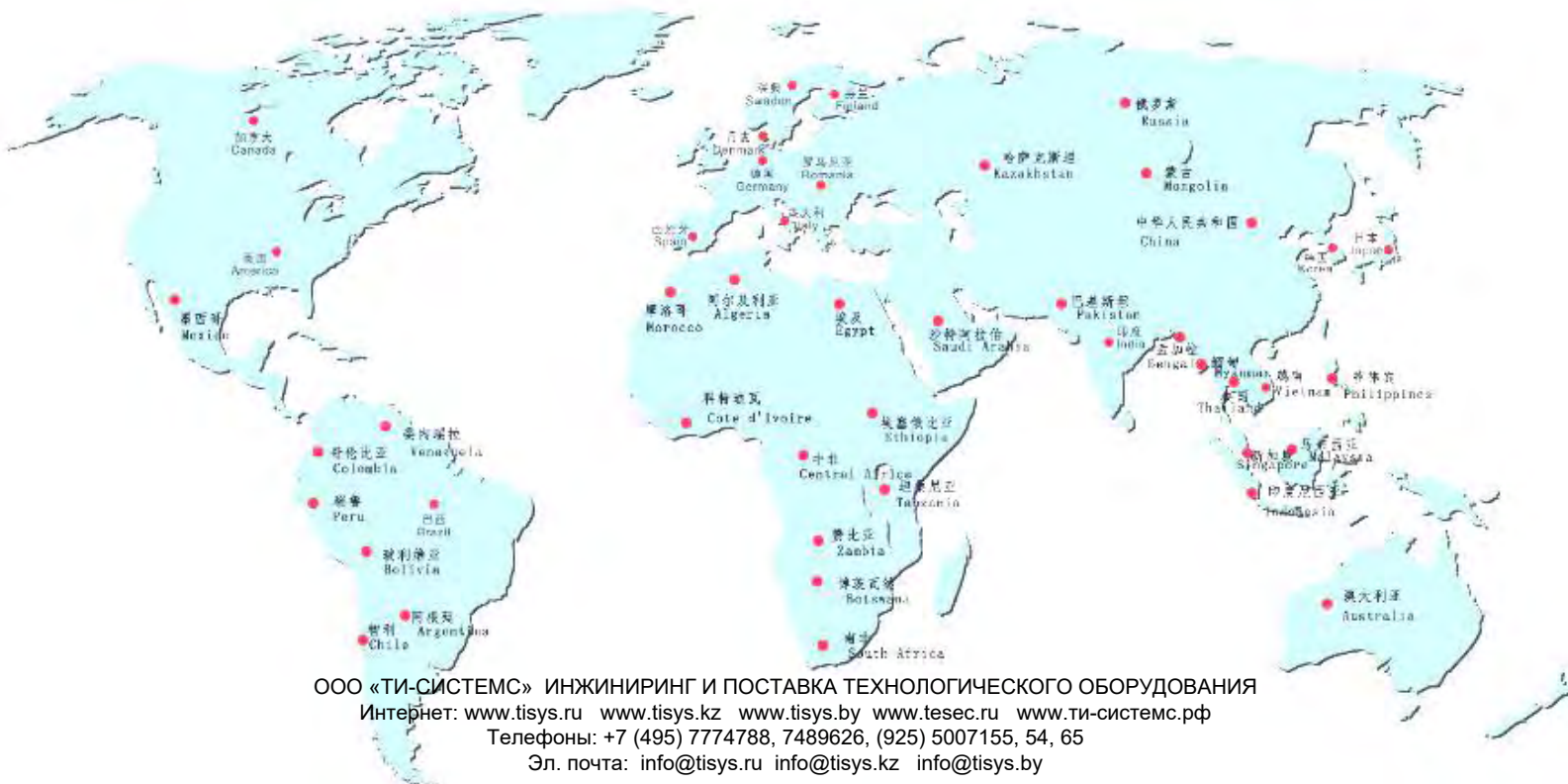
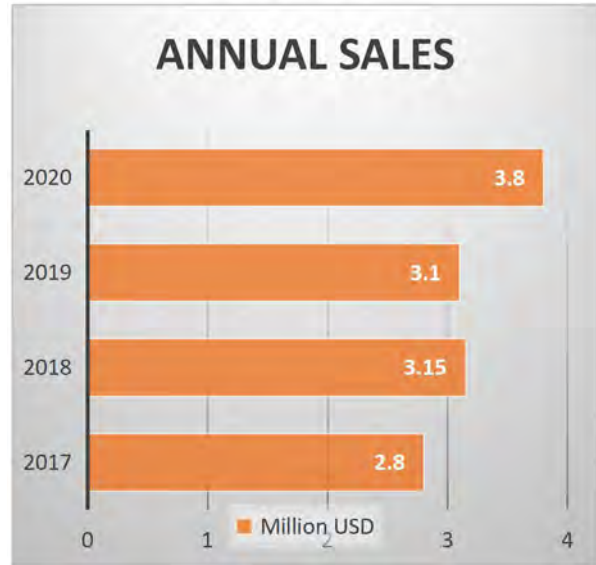
Интернет: www.tisys.ru www.tisys.kz www.tisys.by www.tesec.ru www.ти-системс.рф

Телефоны: +7 (495) 7774788, 7489626, (925) 5007155, 54, 65

Эл. почта: info@tisys.ru info@tisys.kz info@tisys.by

Global Market

An Pump Machinery has more than 90 customers in Asia, Europe and America, and its main economic indicators have been at the forefront of the industry in China for many years. More than 70% of the products are exported to internationally renowned companies in more than 15 countries and regions, including the United States, Canada, Peru, Chile, Mexico, South Korea, Southeast Asian countries, the Middle East, the United Kingdom, the Netherlands, and Norway.



Partner

