

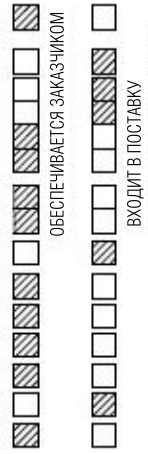
ОТВЕТСТВЕННОСТЬ ЗАКАЗЧИКА

- A1 ПОДВОД АЗОТА 70-120 PSIG (484 – 830 kPa) (3)
- L1 МОНТАЖ И ПОДКЛЮЧЕНИЕ СБОРКИ ЛИНИЙ ОТБОРА/ВОЗВРАТА
- L1-1 ПОДКЛЮЧЕНИЕ ЛИНИИ ПРОБЫ (1)
- L1-2 ПОДКЛЮЧЕНИЕ ЛИНИИ ВОЗВРАТА (1)
- L3 МОНТАЖ И ПОДКЛЮЧЕНИЕ ЛИНИИ АЗОТА НА АСПИРАТОР ЗОНДА (5)
- L2 МОНТАЖ И ПОДКЛЮЧЕНИЕ ЛИНИИ КАЛИБРОВОЧНОГО ГАЗА (5)
- C1 МОНТАЖ КАБЕЛЯ КОНТРОЛЯ ТЕМПЕРАТУРЫ ЗОНДА (4)
- C2 МОНТАЖ КАБЕЛЯ ЭЛЕКТРОПИТАНИЯ ЗОНДА (4)
- C3 МОНТАЖ КАБЕЛЯ ЭЛЕКТРОПИТАНИЯ ЛИНИЙ ОТБОРА/ВОЗВРАТА (4)
- C4 ПОДКЛЮЧЕНИЕ ДАТЧИКА ТЕМПЕРАТУРЫ 1 (4)
- C5 ПОДКЛЮЧЕНИЕ ДАТЧИКА ТЕМПЕРАТУРЫ 2 (4)
- C6 МОНТАЖ И ПОДКЛЮЧЕНИЕ СИГНАЛЬНОГО КАБЕЛЯ (2)
- C7 МОНТАЖ И ПОДКЛЮЧЕНИЕ КАБЕЛЯ РЕЛЕЙНЫХ СИГНАЛОВ (2)
- B1 МОНТАЖ ЗОНДА НАG
- B2 УСТАНОВКА ОТВЕТНОГО ФЛАНЦА 1-1/2" x 300# RF

ЭЛЕКТРОПИТАНИЕ

- P1 МОНТАЖ КАБЕЛЯ ЭЛЕКТРОПИТАНИЯ АНАЛИЗАТОРА 240V, 1 Ph, 50/60 Hz И ЗОНДА, 850W (2)
- P2 МОНТАЖ КАБЕЛЯ ЭЛЕКТРОПИТАНИЯ ЛИНИЙ ОТБОРА/ВОЗВРАТА 240V, 1 Ph, 50/60 Hz, 800W (4)

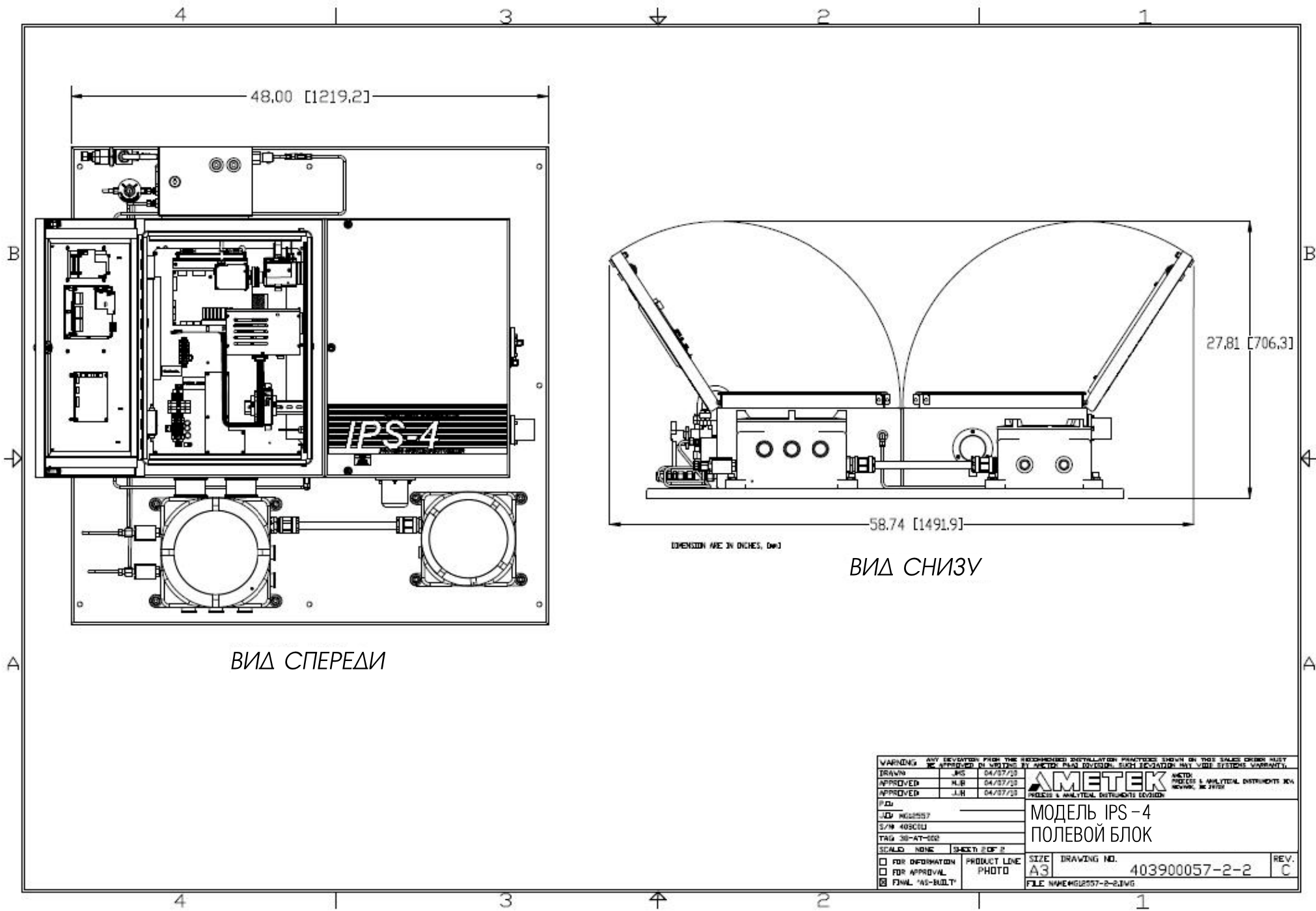
CUSTOMER AREA CLASSIFICATION:
ATEX ZONE 2 T3

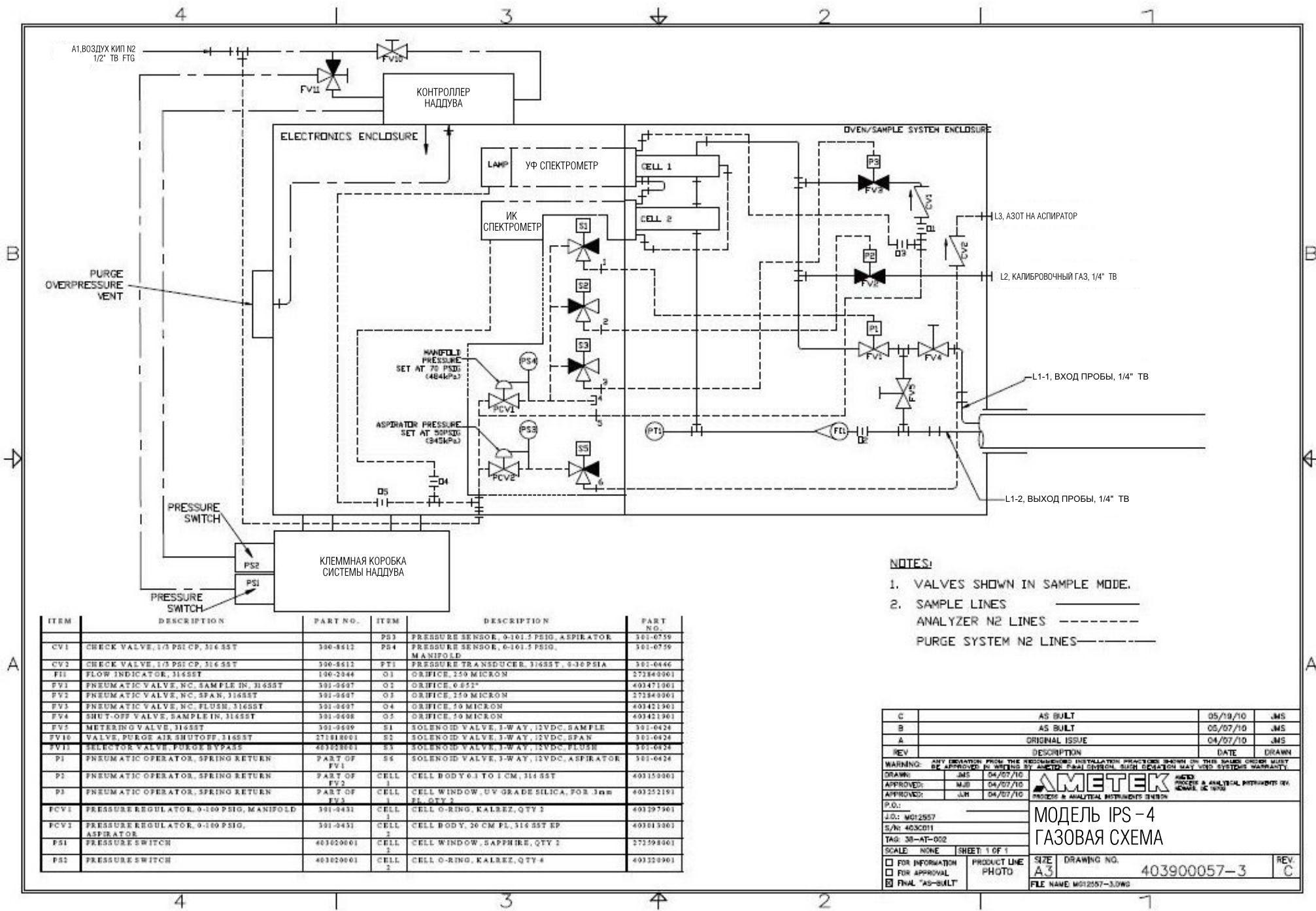


- ① 1/4" O.D. TUBE CONNECTION
- ② M32
- ③ 1/2" O.D. TUBE CONNECTION
- ④ M25
- ⑤ 6mm TUBE CONNECTION*

*AMETEK TO PROVIDE, LOOSE, 1/4" OD TO 6mm REDUCERS

B	AS BUILT	05/19/10	JMS
A	ORIGINAL ISSUE	04/07/10	JMS
REV	DESCRIPTION	DATE	DRAWN
<small>WARNING: ANY DEVIATION FROM THE RECOMMENDED INSTALLATION PRACTICES SHOWN ON THIS SALES ORDER MUST BE APPROVED IN WRITING BY AMETEK FIELD SERVICE. SUCH DEVIATIONS MAY VOID FUTURE WARRANTY.</small>			
DRAWN:	JMS 04/07/10		
APPROVED:	MJB 04/07/10		
APPROVED:	JLH 04/07/10		
P.O.:	2000-0E-1370	МОДЕЛЬ IPS-4 БЛОК - СХЕМА	
J.O.:	M012557	SIZE A3 DRAWING NO. 403900057-1 REV B	
S/N:	403C011	FILE NAME M012557-1.DWG	
TAG:	38-AT-002	SCALE: NONE SHEET: 1 OF 1	
<input type="checkbox"/> FOR INFORMATION <input type="checkbox"/> FOR APPROVAL <input checked="" type="checkbox"/> FINAL "AS-BUILT"	PRODUCT LINE PHOTO		



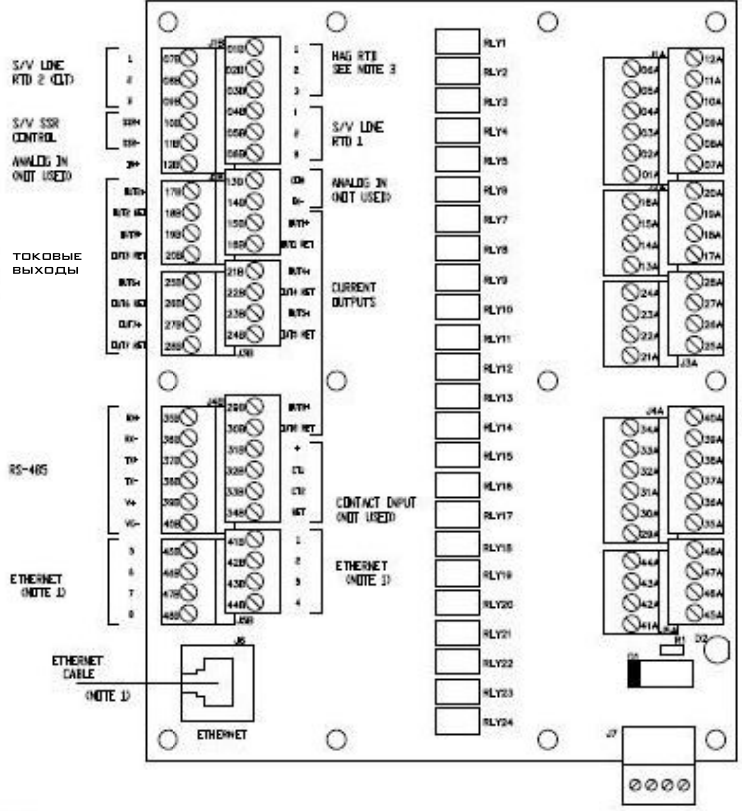


- NOTES:**
1. VALVES SHOWN IN SAMPLE MODE.
 2. SAMPLE LINES _____
ANALYZER N2 LINES - - - - -
PURGE SYSTEM N2 LINES - - - - -

ITEM	DESCRIPTION	PART NO.	ITEM	DESCRIPTION	PART NO.
CV1	CHECK VALVE, 1/3 PSI CP, 314 SST	390-8412	PS3	PRESSURE SENSOR, 0-101.5 PSIG, ASPIRATOR	301-0759
CV2	CHECK VALVE, 1/3 PSI CP, 314 SST	390-8412	PS4	PRESSURE SENSOR, 0-101.5 PSIG, MANIFOLD	301-0759
FI1	FLOW INDICATOR, 314SST	190-2944	PT1	PRESSURE TRANSDUCER, 314SST, 0-30 PSIA	301-0446
FV1	PNEUMATIC VALVE, NC, SAMPLE IN, 314SST	301-8497	O1	ORIFICE, 150 MICRON	37384001
FV2	PNEUMATIC VALVE, NC, SPAN, 314SST	301-8497	O2	ORIFICE, 0.652"	403471901
FV3	PNEUMATIC VALVE, NC, FLUSH, 314SST	301-8497	O3	ORIFICE, 150 MICRON	37384001
FV4	SHUT-OFF VALVE, SAMPLE IN, 314SST	301-8498	O4	ORIFICE, 50 MICRON	403421901
FV5	METERING VALVE, 314SST	301-8499	O5	ORIFICE, 50 MICRON	403421901
FV10	VALVE, PURGE AIR SHUTOFF, 314SST	271818001	S1	SOLENOID VALVE, 3-WAY, 12VDC, SAMPLE	301-0424
FV11	SELECTOR VALVE, PURGE BYPASS	403020001	S2	SOLENOID VALVE, 3-WAY, 12VDC, SPAN	301-0424
P1	PNEUMATIC OPERATOR, SPRING RETURN	PART OF FV1	S3	SOLENOID VALVE, 3-WAY, 12VDC, FLUSH	301-0424
P2	PNEUMATIC OPERATOR, SPRING RETURN	PART OF FV2	S4	SOLENOID VALVE, 3-WAY, 12VDC, ASPIRATOR	301-0424
P3	PNEUMATIC OPERATOR, SPRING RETURN	PART OF FV3	CELL 1	CELL BODY 0.1 TO 1 CM, 314 SST	403159001
PCV1	PRESSURE REGULATOR, 0-100 PSIG, MANIFOLD	301-8433	CELL 2	CELL WINDOW, UV GRADE SILICA, FOR 3mm FL, QTY 2	403252191
PCV2	PRESSURE REGULATOR, 0-100 PSIG, ASPIRATOR	301-8433	CELL 3	CELL O-RING, KALREZ, QTY 2	403297501
PS1	PRESSURE SWITCH	403020001	CELL 4	CELL BODY, 30 CM FL, 314 SST EP	403013901
PS2	PRESSURE SWITCH	403020001	CELL 5	CELL WINDOW, SAPPHIRE, QTY 2	373298901
			CELL 6	CELL O-RING, KALREZ, QTY 4	403299901

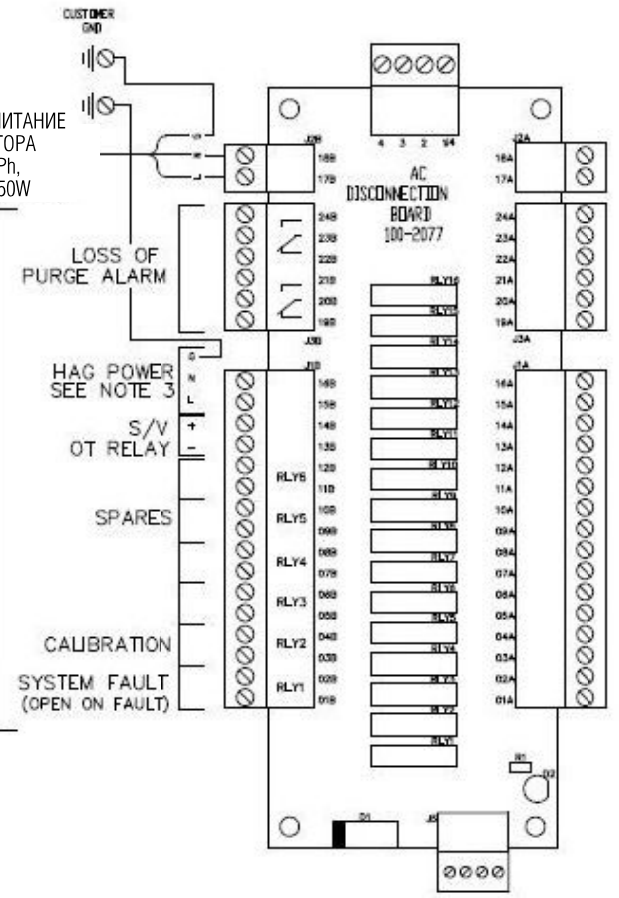
C	AS BUILT	05/19/10	JMS
B	AS BUILT	05/07/10	JMS
A	ORIGINAL ISSUE	04/07/10	JMS
REV	DESCRIPTION	DATE	DRAWN
WARNING: ANY DEVIATION FROM THE RECOMMENDED INSTALLATION PROCEDURES SHOWN ON THIS SPARE ORDER SHEET OR APPROVED IN WRITING BY AMETEK FIELD ENGINEER, SUCH DEVIATION MAY VOID SYSTEM WARRANTY.			
DRAWN:	JMS	04/07/10	
APPROVED:	MJD	04/07/10	
APPROVED:	JUN	04/07/10	
AMETEK PROCESS & ANALYTICAL INSTRUMENTS DIVISION AMETEK & ANALYTICAL INSTRUMENTS DIVISION MODEL IPS-4 ГАЗОВАЯ СХЕМА			
J.O.:	M012557		
S/N:	4030011		
TAG:	30-AT-002		
SCALE:	NONE	SHEET:	1 OF 1
<input type="checkbox"/> FOR INFORMATION	PRODUCT LINE	SIZE	DRAWING NO.
<input type="checkbox"/> FOR APPROVAL	PHOTO	A3	403900057-3
<input checked="" type="checkbox"/> FINAL "AS-BUILT"		REV.	C
		FILE NAME:	M012557-3.DWG

ПЛАТА АНАЛОГОВЫХ ВВОДОВ/ВЫВОДОВ



ЭЛЕКТРОПИТАНИЕ АНАЛИЗАТОРА
240VAC, 1Ph,
50/60Hz, 850W

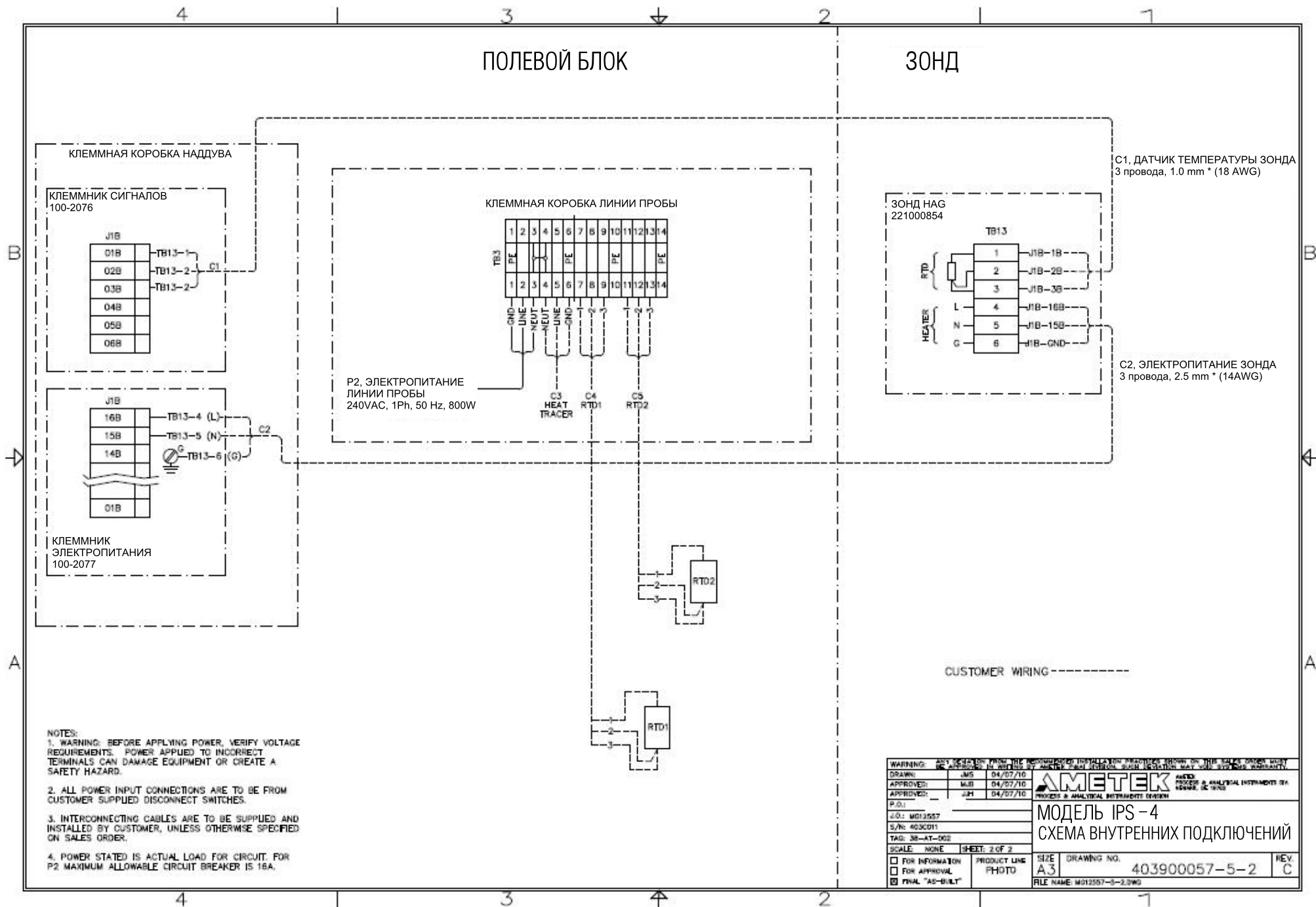
РЕЛЕЙНЫЕ
ВЫХОДЫ



- NOTES:
 1. USE ETHERNET CABLE (ATJ8) OR DISCRETE WIRES (ATJ5B).
 2. CURRENT OUTPUTS (4-20 mA)
 IOUT1: 0-100% H2S
 IOUT2: 0-2% THC
 IOUT3: 0-50% NH3
 IOUT4:
 IOUT5:
 3. SEE SHEET 2 FOR WIRING DETAILS.

TERM.	FUSE RATINGS	
	AC LINE VOLTAGE	
11	120 V	240 V
	6.3 A T 301-0853	
12	2 A T 301-0851	
	4 A T 301-0852	2 A T 301-0851
14	1 A T 301-0850	0.5 A T 301-0859

C	AS BUILT	05/19/10	JMS
B	AS BUILT	05/03/10	JMS
A	ORIGINAL ISSUE	04/07/10	JMS
REV	DESCRIPTION	DATE	DRAWN
WARNING: ANY REPAIR FROM THE RECOMMENDED INSTALLATION PROCEDURES SHOWN ON THIS SHEET OR ANY MUST BE APPROVED BY METEK. ANY DISCREPANCY WITH THESE PROCEDURES MAY VOID YOUR WARRANTY. DRAWN: JMS 04/07/10 APPROVED: MJB 04/07/10 APPROVED: JPI 04/07/10			
AMETEK PROCESS & ANALYTICAL INSTRUMENTS DIV. FORT MONROE, VA 23604			
P.O. BOX 100 401 W. 10th St. Fort Worth, TX 76102		МОДЕЛЬ IPS-4 СХЕМА ВНЕШНИХ ПОДКЛЮЧЕНИЙ	
SIZE: A3 SCALE: NONE SHEET: 1 OF 2	DRAWING NO. 403900057-5-1 FILE NAME: M012557-5.DWG	REV. C	



WARNING: ANY REPAIRS FROM THE RECOMMENDED INSTALLATION PROCEDURES SHOWN ON THIS SALES ORDER MUST BE APPROVED BY AMETEK FIELD SERVICE ENGINEERS. YOUR PRODUCT MAY BE VOID OF WARRANTY.		 AMETEK PROCESS & ANALYTICAL INSTRUMENTS DIV. HENNEB, IL, USA	
DRAWN:	JMS		
APPROVED:	MJB	04/07/10	
APPROVED:	JM	04/07/10	
P.O.:			
Q.O.:	M012557		
S/N:	403C011		
TAG:	38-AT-002		
SCALE:	NONE	SHEET: 2 OF 2	
<input type="checkbox"/> FOR INFORMATION	PRODUCT LINE	SIZE	DRAWING NO.
<input type="checkbox"/> FOR APPROVAL	PHOTO	A3	403900057-5-2
<input checked="" type="checkbox"/> FINAL "AS-BUILT"			REV. C
		FILE NAME: M012557-5-2.DWG	

